



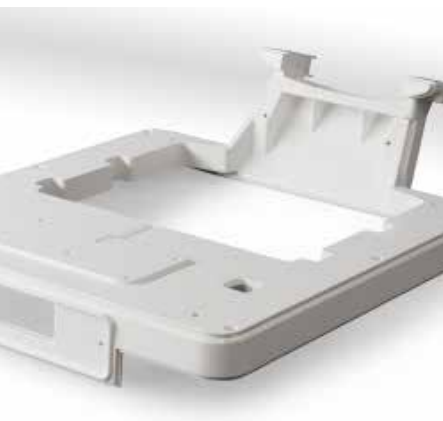
Implementation of all casing components  
for a mobile X-Ray Machine

# The Ideal combination of design, function and efficiency

As experienced specialist within the field of thermoplastic plastic injection molding, we are a valuable partner for prestige manufacturer of modern equipment for medical technology.

Our casing components considered practical requirements such as stability or density against fluids as well as strict customer-design-requirements. As required, we develop solutions, where different materials can be optimal combined with each other.

Prototypes are manufactured with SLS – technique – therefore our customers can evaluate design and functionality of the product. The necessity of subsequent toll adjustment is reduced to a minimum.



During the development of the casing components, we succeeded to realize to combine the complex part geometry within one tool.



The sensitive radiation source is enclosed by two times lacquered plastic half shells with mounted CFK-plates. An integrated waterproof prevents the penetration of liquids. Stress tests ensure that even at a frontal crash the connection between the two half shells will not be loose.



The two times lacquered handle maintain a position even with a 20 mm wall thickness. The required resistance was realized without a stabilized metal inlay.



The casing of Chassis is built to not break or loosen from impacts or vibrations.

Even at an impact of a 500 g heavy ball from 1.5-meter height, the in-glued CFK plate is not allowed to loosen. The holding mechanism is perfectly waterproofed. With profound construction know-how and experiences with different glue procedures, our experts develop convincing solutions for both tasks.



# From design implementation up to production line – we are taking care of this for you

**Design and Re-Engineering** – With over 60 years of experience in the field of plastic processing we are able to build your design ideas up to series-production readiness. For this we implement your design in an appropriate for the material involved and cost-efficient way into the CAD machine. By computer simulation we optimize the performance of your product. During the process our developer and construction engineers are working closely together to meet all your requirements at its best.

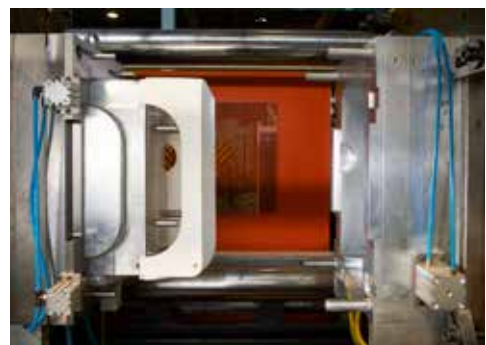
**Building of the prototype** – Before the tool is build, we recommend you to build a prototype via 3D-printing. Through SLS we build an exact model of your product with whom you can perform several tests, like crash, heat, and erosion. With this it is possible to identify possible weak points and clear them before actual production before costly changes need to be made on the tool. On demand our in-house lacquering will paint your prototype for possible pre-marketing-actions.

**Tool Manufacturing** – required injection molding tools are built in our in-house tool manufacturing to provide these to our distributor in a fast and cost-efficient way.

**Production** – Through our highly efficient injection molding tools we manufacture your plastic parts on time with an injection weight between 2 – 8.000 g (inclusive TSG-Process). Because of our capacity, we are able to realize large-scale projects as well as small-scale projects within a short period of time and in the highest quality standard.

**Lacquering, Printing and Subassembly** – Finishing the product through lacquering, coating or printing and the final assembly are important areas of competences within our company besides our Part and Tool construction. We offer you a multi-color lacquering as well as special coating and printing in the process of screen or pad printing. Our spectrum of possibilities for you last from edit your product in a special lacquering cabin up to an automatic serial lacquering.

**Logistics** – As a system and A-vendor we deliver for our customer their products to the point of assembly line. If necessary, we will provide suitable packaging for the product.



# FRÖR KUNSTSTOFFTECHNIK



Frör Kunststofftechnik GmbH

Schallershoferstraße 106

91056 Erlangen

Tel. +49 9131 933088 0

Fax +49 9131 933088 150

info@froer-kunststofftechnik.de

www.froer-kunststofftechnik.de

A company of

 **FRÖR** Group

